

Big Splash

A Free Project Sheet
NOT FOR RESALE

By Heather Mulder Peterson

Bag Design by Heidi Pridemore



Beach Bag

Skill Level: Advanced Beginner

 **Henry Glass & Co., Inc.**



facebook

Finished Bag Size: 18" x 13"
49 West 37th Street, New York, NY 10018
tel: 212-686-5194 fax: 212-532-3525
Toll Free: 800-294-9495
www.henryglassfabrics.com

BIG SPLASH

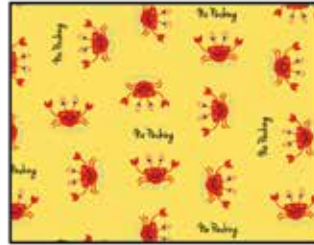
Beach Bag

Finished Bag Size: 18" x 13"

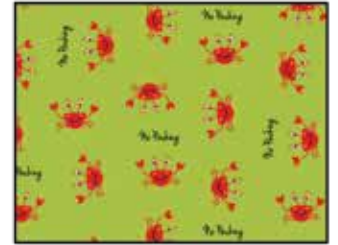
Fabrics in the Collection



Sea-Life Patchwork - Multi
6823-16



Crabs - Yellow
6824-44



Crabs - Green
6824-66



Chevron - Multi
6825-16



Submarine - Teal
6826-77



Sea-Life Allover - Blue
6827-11



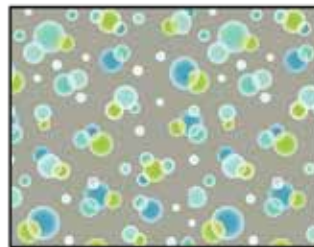
Swirls - Blue
6828-11



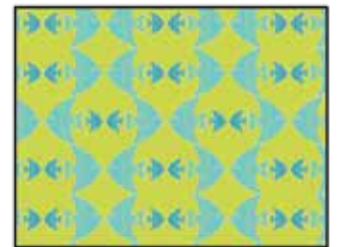
Swirls - Gray
6828-90



Bubbles - Orange
6829-33



Bubbles - Gray
6829-90



Fish - Green
6830-66



Fish - Red
6830-88



Seahorse - Cream/Blue
6831-19

Select Fabrics Modern Melody Basics



Pigment White
1063-01W



Orange
1063-34



Marigold
1063-48



Spring Green
1063-66



Chili
1063-83



Black
1063-99

BIG SPLASH

Beach Bag

Materials

¼ yard	Chevron - Multi (A)	6825-16
⅓ yard	Sea-Life Allover - Blue (B)	6827-11
¼ yard	Bubbles - Orange (C)	6829-33
¼ yard	Bubbles - Gray (D)	6829-90
1 yard	Crabs - Yellow (E)	6824-44

You will also need:

- 1 yard of drawstring cord
- (1) 18 ½" x 41 ½" piece of stabilizer

Cutting Instructions

Please note: all strips are cut across the width of fabric (WOF) from selvage to selvage edge unless otherwise noted.

From the Chevron - Multi (A), cut:

- (1) 6 ½" x 41 ½" strip

From the Sea-Life Allover - Blue (B), cut:

- (1) 8 ½" x 41 ½" strip

From the Bubbles - Orange (C), cut:

- (1) 5 ¼" x 41 ½" strip

From the Bubbles - Gray (D), cut:

- (1) 4" x WOF strip

From the Crabs - Yellow (E), cut:

- (1) 18 ½" x 41 ½" strip
- (2) 13 ½" circles (*Make sure to enlarge the circle template before using.*)

Sewing Instructions

1. Sew together (1) 6 ½" x 41 ½" Fabric A strip, (1) 8 ½" x 41 ½" Fabric B strip and (1) 5 ¼" x 41 ½" Fabric C strip, lengthwise to make (1) 18 ½" x 41 ½" Outer Bag (Fig. 1).

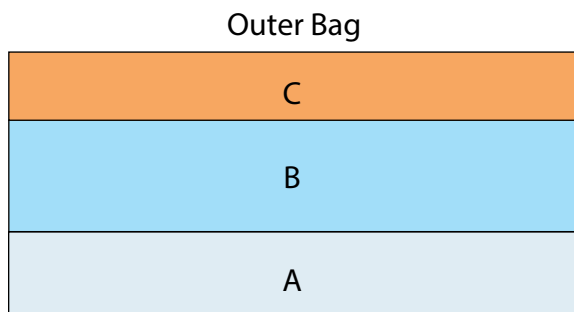


Fig. 1

2. Follow the manufacturer's instructions to press one piece of stabilizer to the wrong side of the outer bag.

3. Pin the outer bag to one 13 ½" Fabric E circle to check the measurement of the outer bag to the circle make sure the outer bag overlaps ¼" for the seam allowance. Unpin the pieces and trim the outer bag if needed. Repeat with the 18 ½" x 41 ½" Fabric E strip and the second 13 ½" Fabric E circle.

4. With right sides of fabric together, fold the outer bag in half to align the outer bag sides. Starting at the top, stitch down ¼" and backstitch. Move down ¾" and start stitching again, backstitching at the start to complete the side seam and to leave an opening for the drawstring (Fig. 2).

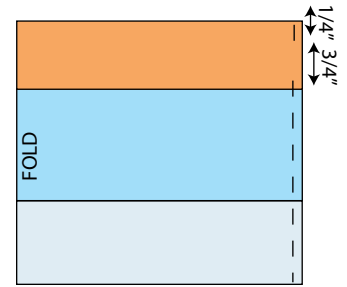


Fig. 2

5. To make the strap, fold one 4" x WOF strip in half lengthwise and press (Fig. 3). Open the folded fabric and fold each long edge to the creased centerline and press (Fig. 4).

6. Fold the pressed fabric in half again and press to make one 1" x WOF strip (Fig. 5). Top stitch down both long sides 1/8" in from the edge (Fig. 6).



Fig. 3

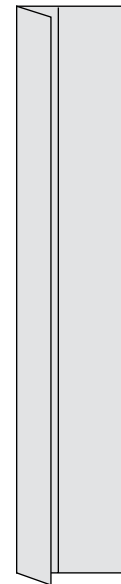


Fig. 4



Fig. 5



Fig. 6

7. Pin one end of the strap to the top of the outer bag and pin the other end of the strip to the bottom of the outer bag.

8. Pin the outer bag with strap to the 13 ½" Fabric E circle, right sides together and sew them together to complete the outer bag.

9. Fold the 18 ½" x 41 ½" Fabric E strip in half to align the 18 ½" sides. Stitch down the sides, leaving a 4" opening for turning to make the lining.

BIG SPLASH

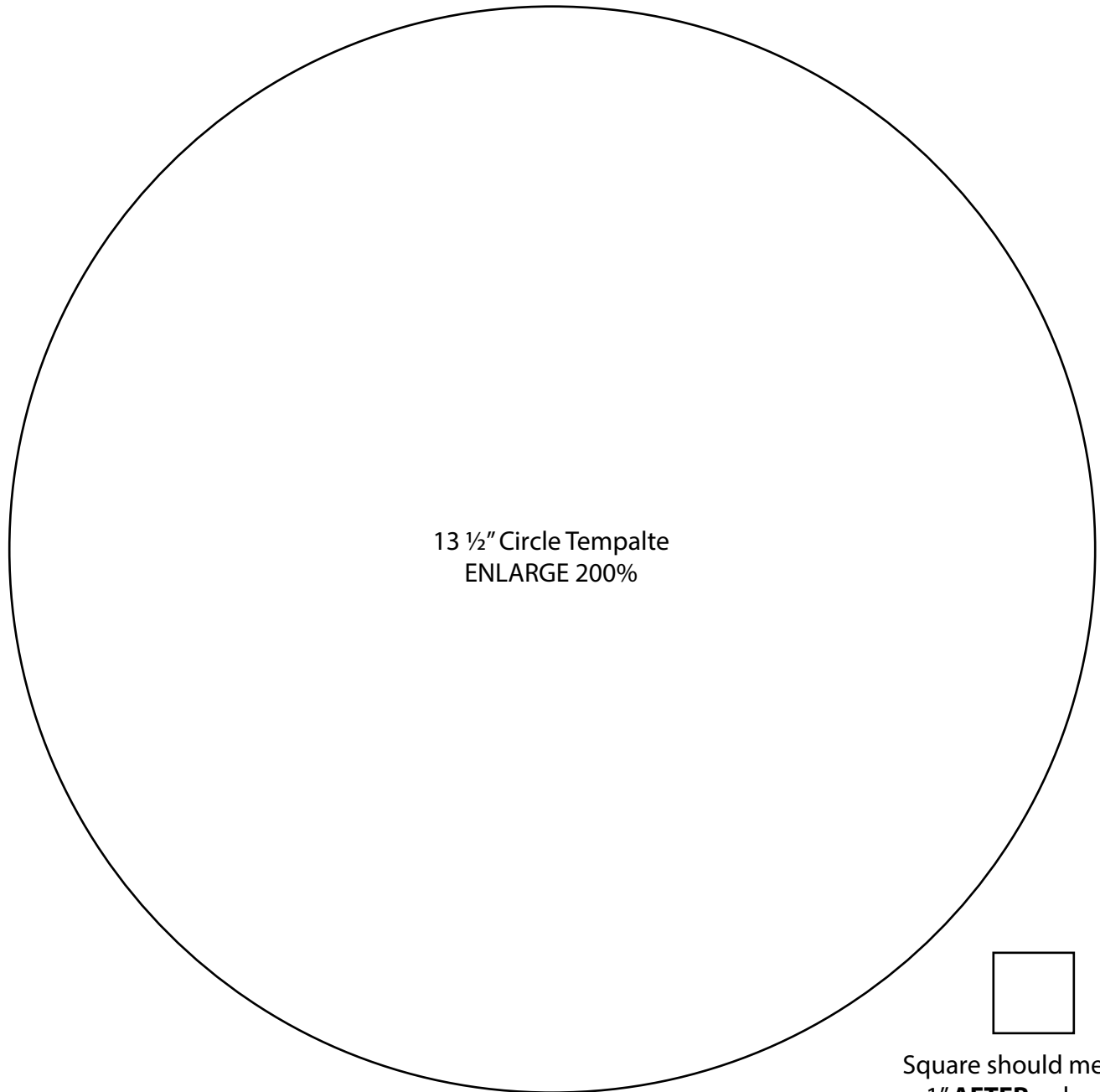
Beach Bag

Page 2

10. Pin the lining to the second 13 ½” Fabric E circle, right sides together and stitch together to complete the lining.

11. Slide the outer bag into the lining, right sides together, aligning the raw edges and pin together. Stitch the lining and outer bag together. Turn the bag right side out and stitch the opening closed.

12. Thread the drawstring through the opening at the top of the bag, around the top edge and back out the opening. Trim the drawstring to the desired length and tie a knot on each end.



13 ½” Circle Tempalte
ENLARGE 200%



Square should measure
1” **AFTER** enlarging
template 200%

Every effort has been made to ensure that all projects are error free. All the information is presented in good faith, however no warranty can be given nor results guaranteed as we have no control over the execution of instructions. Therefore, we assume no responsibility for the use of this information or damages that may occur as a result. When errors are brought to our attention, we make every effort to correct and post a revision as soon as possible. Please make sure to check www.henryglassfabrics.com for pattern updates prior to starting the project. We also recommend that you test the project prior to cutting for kits. Finally, all free projects are intended to remain free to you and are not for resale.

©2017 Henry Glass & Co., Inc.