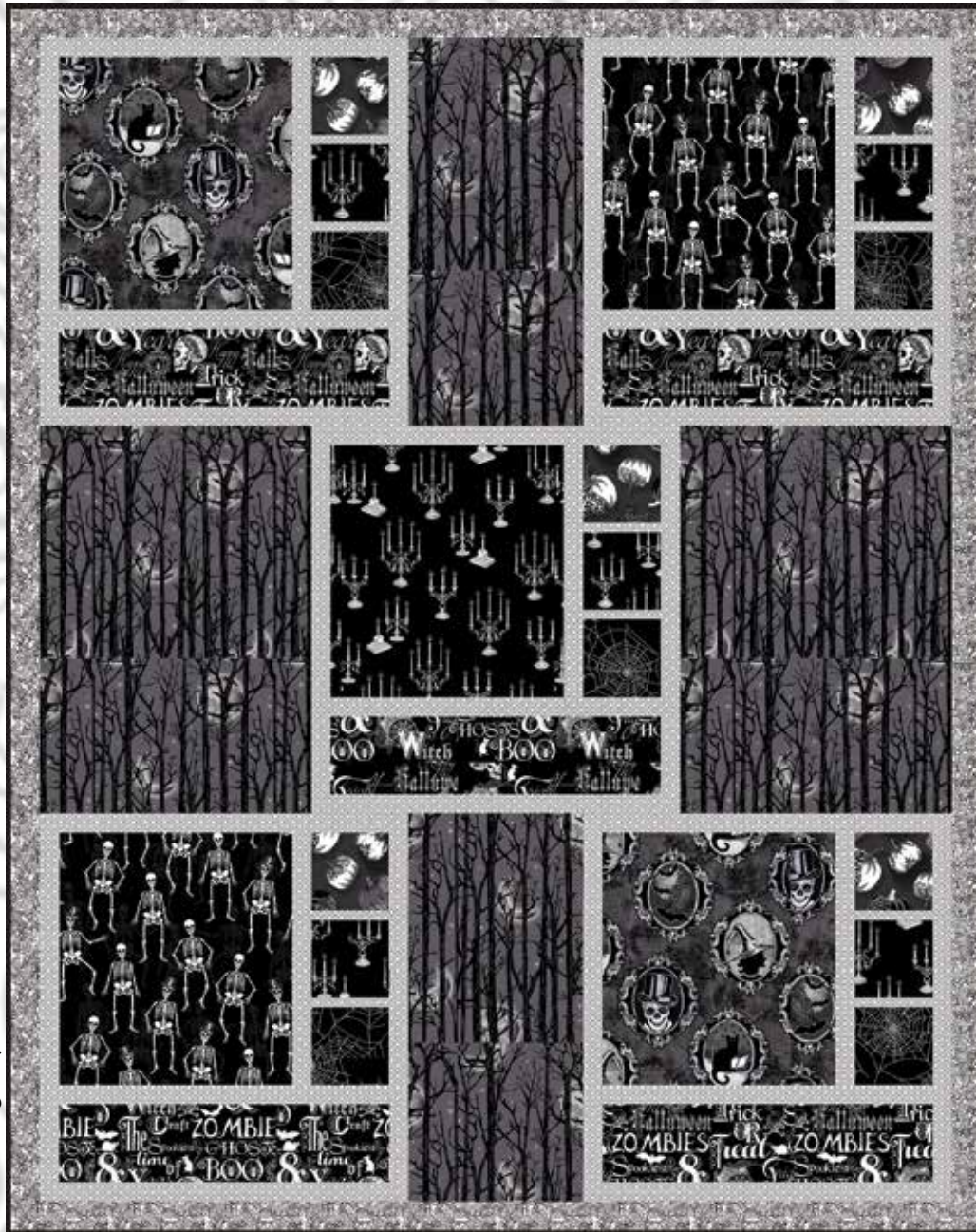


Fright Night



Quilt Design by Heidi Pridemore

Quilt 2

Skill Level: Advanced Beginner

A Free Project Sheet From



facebook

Finished Quilt Size: 50" x 63"
49 West 37th Street, New York, NY 10018
tel: 212-686-5194 fax: 212-532-3525
Toll Free: 800-294-9495
www.henryglassfabrics.com

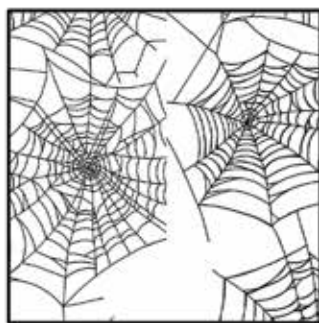
FRIGHT NIGHT Quilt 2

Finished Quilt Size: 50" x 63"

Fabrics in the Collection



Halloween Words - Black
1106M-99



Spider Web - White
1107-1



Spider Web - Black
1107M-99



Skeletons - White
1108M-1



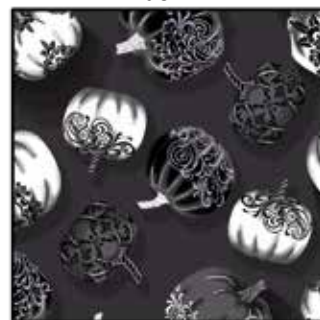
Skeletons - Black
1108M-99



Halloween Frames - Gray
1109M-90



Candelabras - Black
1110M-99



Pumpkins - Gray
1111M-90

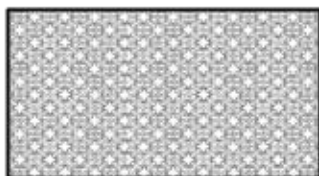


Moonlit Trees - Gray
1112M-90



Scroll - Black/White
1113-19

Select Fabrics from Modern Melody Basics Collection



Modern Melody Basics
White/Black - 1063-09



Modern Melody Basics
Black - 1063-99

Materials

½ yard	Halloween Frames - Gray (A)	1109M-90
¼ yard	Pumpkins - Gray (B)	1111M-90
⅔ yard	Candelabras - Black (C)	1110M-99
¼ yard	Spider Web - Black (D)	1107M-99
½ yard	Halloween Words - Black (E)	1106M-99
1 ¼ yards	Moonlit Trees - Gray (F)	1112M-90
½ yard	Skeletons - Black (G)	1108M-99
½ yard	Scroll - Black/White (H)	1113-19
⅞ yard	Modern Melody Basics - White/Black (I)	1063-09
½ yard	Modern Melody Basics - Black (J)	1063-99*
3 ¼ yards	Spider Web - White (Backing)	1107-1

*Includes binding

Cutting Instructions

Please note: all strips are cut across the width of fabric (WOF) from selvage to selvage edge unless otherwise noted.

From the Halloween Frames - Gray (A), cut:

- (1) 13 ½" x WOF strip. Sub-cut strip into (2) 12 ½" x 13 ½" strips.

From the Pumpkins - Gray (B), cut:

- (1) 4 ½" x WOF strip. Sub-cut strip into (5) 4 ½" squares.

From the Candelabras - Black (C), cut:

- (1) 4 ½" x WOF strip. Sub-cut strip into (5) 4 ½" squares.
- (1) 13 ½" x WOF strip. Sub-cut strip into (1) 12 ½" x 13 ½" strip.

From the Spider Web - Black (D), cut:

- (1) 4 ½" x WOF strip. Sub-cut strip into (5) 4 ½" squares.

From the Halloween Words - Black (E), cut:

- (3) 4 ½" x WOF strips. Sub-cut strips into (5) 4 ½" x 17 ½" strips.

From the Moonlit Trees - Gray (F), cut:

- (1) 20 ½" x WOF strip. Sub-cut strip into (2) 9 ½" x 20 ½" strips.
- (1) 20 ½" x WOF strip. Sub-cut strip into (2) 14 ½" x 20 ½" strips.

From the Skeletons - Black (G), cut:

- (1) 13 ½" x WOF strip. Sub-cut strip into (2) 12 ½" x 13 ½" strips.

From the Scroll - Black/White (H), cut:

- (4) 2" x WOF strips. Sew the strips together end to end with diagonal seams and cut (2) 2" x 60 ½" strips.
- (3) 2" x WOF strips. Sew the strips together end to end with diagonal seams and cut (2) 2" x 50 ½" strips.

From the Modern Melody Basics - White/Black (I), cut:

- (5) 1 ½" x WOF strips. Sub-cut strips into (10) 1 ½" x 20 ½" strips.
- (8) 1 ½" x WOF strips. Sub-cut strips into (15) 1 ½" x 17 ½" strips.
- (2) 1 ½" x WOF strips. Sub-cut strips into (5) 1 ½" x 13 ½" strips.
- (2) 1" x WOF strips. Sub-cut strips into (10) 1" x 4 ½" strips.

From the Modern Melody Basics - Black (J), cut:

- (6) 2 ½" x WOF strips for the binding.

From the Spider Web - White (Backing), cut:

- (2) 58" x WOF strips for the backing. Sew the strips together and trim to make the 58" x 71" back.

Sewing Instructions

1. Sew (1) 4 ½" Fabric B square, (2) 1" x 4 ½" Fabric I strips, (1) 4 ½" Fabric C square and (1) 4 ½" Fabric D square together to make (1) Unit 1 (Fig. 1). Repeat to make (5) Unit 1's total.

2. Sew (1) 1 ½" x 17 ½" Fabric I strip to the top and to the bottom of (1) 4 ½" x 17 ½" Fabric E strip lengthwise to make (1) Unit 2 (Fig. 2). Repeat to make (5) Unit 2's total.

Unit 1
make 5



Fig. 1

Unit 2
make 5

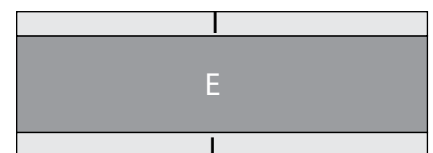


Fig. 2

3. Sew (1) 1 ½" x 13 ½" Fabric I strip to the right side of (1) 12 ½" x 13 ½" Fabric A strip to make (1) A Block. Sew (1) Unit 1 to the right side of the A Block. Sew (1) Unit 2 to the bottom of the A Block. Sew (1) 1 ½" x 17 ½" Fabric I strip to the top of the A Block. Sew (1) 1 ½" x 20 ½" Fabric I strip to each side of the A Block to make (1) Block One (Fig. 3). Repeat to make a second Block One.

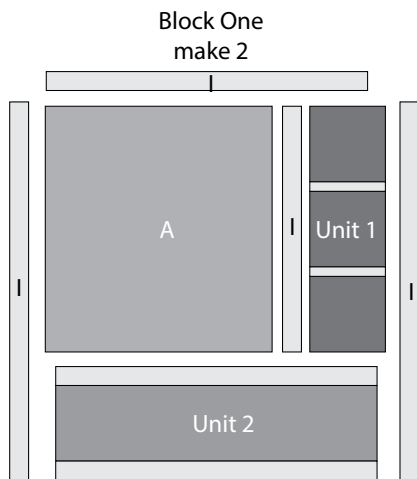


Fig. 3

4. Repeat Step 3 and use Figures 4 and 5 for fabric identification and location to make (2) Block Twos and (1) Block Three.

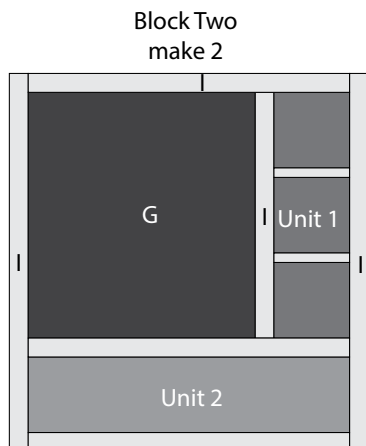


Fig. 4

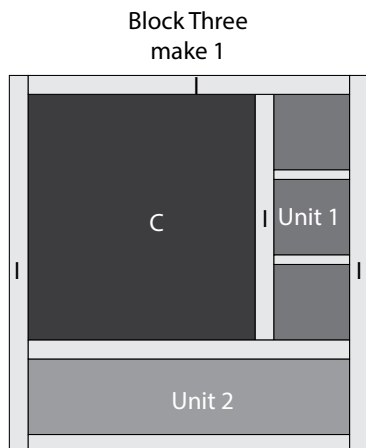


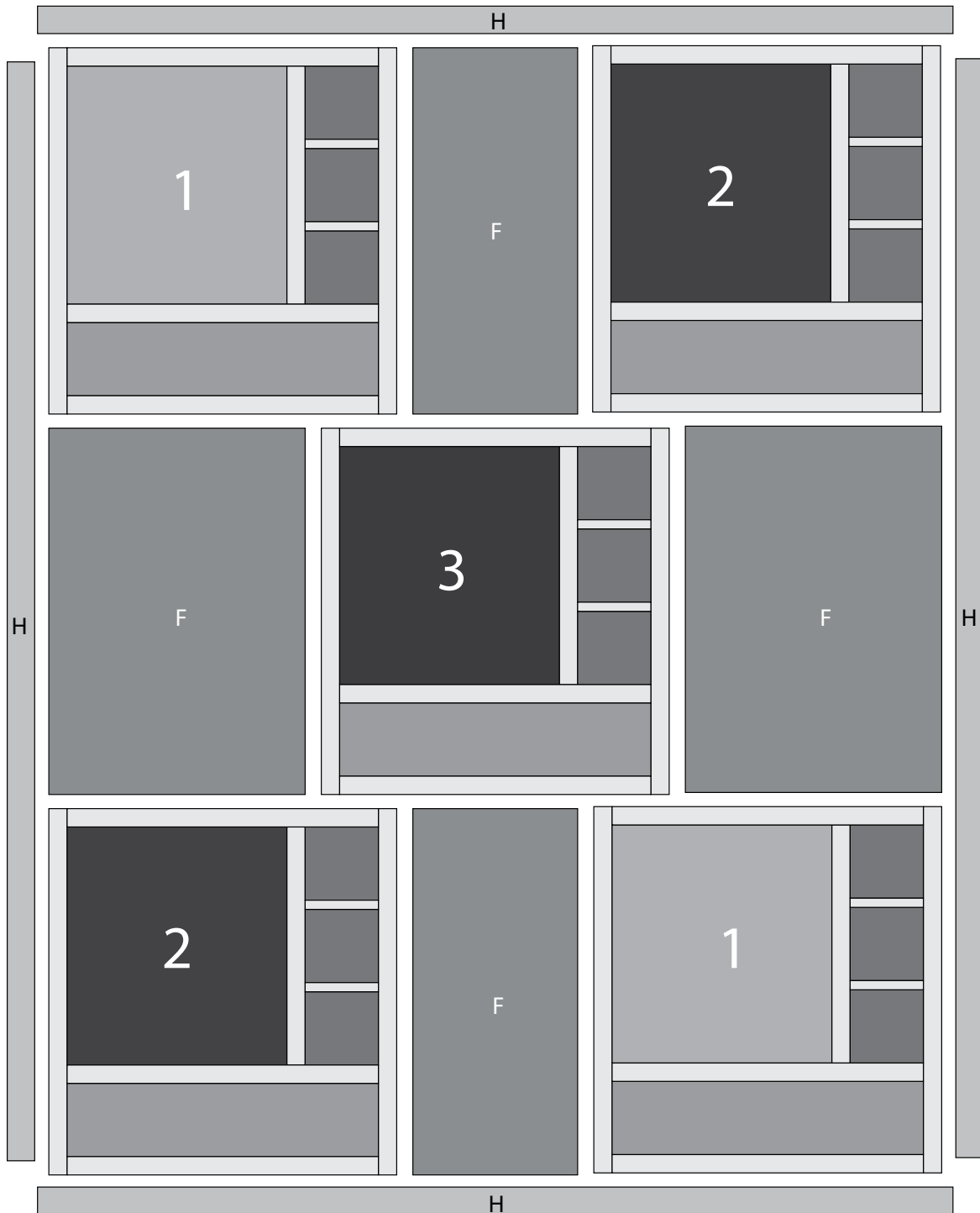
Fig. 5

Quilt Top Assembly

(Refer to the Quilt Layout while assembling.)

5. Sew (1) Block One to the left side of (1) 9 1/2" x 20 1/2" Fabric F strip. Sew (1) Block Two to the right side of the Fabric F strip to make Row One.
6. Sew (1) 14 1/2" x 20 1/2" Fabric F strip to each side of (1) Block Three to make Row Two.
7. Sew (1) Block Two to the left side of (1) 9 1/2" x 20 1/2" Fabric F strip. Sew (1) Block One to the right side of the Fabric F strip to make Row Three.
8. Sew the (3) rows together in numerical order to make the Center Block.
9. Sew (1) 2" x 60 1/2" Fabric H strip to each side of the Center Block. Sew (1) 2" x 50 1/2" Fabric H strip to the top and to the bottom of the Center Block to make the quilt top.
10. Layer and quilt as desired.
11. Sew the (6) 2 1/2" x WOF Fabric J strips together, end to end with 45-degree seams, to make the binding. Fold this long strip in half lengthwise with wrong sides together and press.
12. Bind as desired.

FRIGHT NIGHT Quilt 2



Quilt Layout

Every effort has been made to ensure that all projects are error free. All the information is presented in good faith, however no warranty can be given nor results guaranteed as we have no control over the execution of instructions. Therefore, we assume no responsibility for the use of this information or damages that may occur as a result. When errors are brought to our attention, we make every effort to correct and post a revision as soon as possible. Please make sure to check www.henryglassfabrics.com for pattern updates prior to starting the project. We also recommend that you test the project prior to cutting for kits. Finally, all free projects are intended to remain free to you and are not for resale.