

# Holiday Magic

By Jan Shade Beach

Stocking Panel



A Free Project Sheet From

 **Henry Glass & Co., Inc.**



[facebook](#)

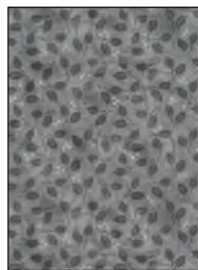
Finished Quilt Size: 66" x 59"  
49 West 37th Street, New York, NY 10018  
tel: 212-686-5194 fax: 212-532-3525  
Toll Free: 800-294-9495  
[www.henryglassfabrics.com](http://www.henryglassfabrics.com)

# HOLIDAY MAGIC

Finished Quilt Size: 66" x 59"

Stocking Panel

## Fabrics in the Collection



Holly Leaves  
Dk. Grey 9804-99



Holly Leaves  
Lt. Grey 9804-90



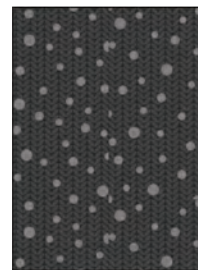
Holly Leaves  
Red 9804-88



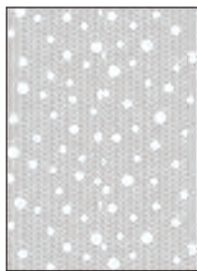
Large Snowflakes  
Grey 9803-99



Large Snowflakes  
Red 9803-88



Knit Texture w/Snow  
Dk. Grey 9802-99



Knit Texture w/Snow  
Lt. Grey 9802-90



Tonal Pinecones  
Grey 9800-99



Tonal Pinecones  
Red 9800-88



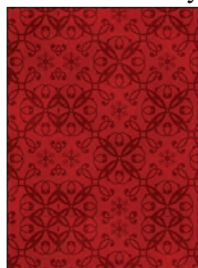
Winter Motifs  
Grey 9799-99



Winter Motifs  
Red 9799-88



Damask - Grey  
9798-99



Damask - Red  
9798-88



Damask - White  
9798-01



Stripe - Grey  
9801-99



Stocking Panel - Lt. Grey  
9805P-90



Blocks Panel - White/Grey  
9797P-09

## Stocking Panel

### Materials

¼ yard	Holly Leaves – Lt. Grey	9804-90
¼ yard	Holly Leaves – Red	9804-88
1 ⅔ yards	Damask – White	9798-01
1 ⅛ yards	Damask – Red	9798-88
¼ yard	Damask – Grey	9798-99
⅜ yard	Winter Motifs – Red	9799-88
¼ yard	Winter Motifs – Grey	9799-99
¼ yard	Tonal Pinecones – Red	9800-88
⅔ yard	Tonal Pinecones – Grey	9800-99
1 ¼ yards	Knit Texture w/Snow – Dk. Grey	9802-99
⅜ yard	Large Snowflakes – Red	9803-88
1 panel	Stocking Panel – Lt. Grey	9805P-90
1 ⅔ yards	Large Snowflakes – Grey	9803-99
4 yards	Holly Leaves – Dk. Grey (Backing)	9804-99

### Cutting Instructions

*Please note: all strips are cut across the width of fabric (WOF) from selvage to selvage edge unless otherwise noted.*

#### From the Holly Leaves - Lt. Grey (A), cut:

- (1) 3 ½” x WOF strip. Sub-cut strip into (6) 3 ½” x 6 ½” strips.

- See instructions to cut (1) ornament #2 bottom.

#### From the Holly Leaves - Red (B), cut:

- See instructions to cut (4) small stars.
- See instructions to cut (1) ornament #1
- See instructions to cut (1) ornament #2 top.
- See instructions to cut (1) ornament #3 top.

#### From the Damask - White (C), cut:

- (1) 23 ½” x 54 ½” strip from the length of fabric (LOF).

#### From the Damask - Red (D), cut:

- (6) 5 ½” x WOF strips. Sew strips together, end to end with diagonal seams, and cut (2) 5 ½” x 56 ½” strips and (2) 5 ½” x 49 ½” strips.

- See instructions to cut (1) ornament #1.

- See instructions to cut (1) ornament #2 top.

#### From the Damask - Grey (E), cut:

- (2) 3 ½” x WOF strips. Sub-cut strips into (12) 3 ½” x 6 ½” strips.

- See instructions to cut (1) ornament #2 middle.

#### From the Winter Motifs - Red (F), cut:

- See instructions to cut (1) stocking, using the stocking in the panel as a template.

#### From the Winter Motifs - Grey (G), cut:

- (1) 3 ½” x WOF strip. Sub-cut strip into (6) 3 ½” x 6 ½” strips.

- See instructions to cut (1) ornament #3 bottom.

#### From the Tonal Pinecones - Red (H), cut:

- See instructions to cut (4) large stars.

#### From the Tonal Pinecones - Grey (I), cut:

- (1) 6 ½” x WOF strip. Sub-cut strip into (10) 3 ½” x 6 ½” strips.

- (1) 3 ½” x WOF strip. Sub-cut strip into (4) 3 ½” squares.

- (1) 5 ½” x WOF strip. Sub-cut strip into (4) 5 ½” squares.

- See instructions to cut (1) ornament #2 bottom.

#### From the Knit Texture w/Snow - Dk. Grey (J), cut:

- (3) 2 ½” x WOF strips. Sew strips together, end to end with diagonal seams, and cut (2) 2 ½” x 54 ½” strips.

- (3) 1 ½” x WOF strips. Sew strips together, end to end with diagonal seams, and cut (2) 1 ½” x 56 ½” strips.

- (3) 1 ½” x WOF strips. Sew strips together, end to end with diagonal seams, and cut (2) 1 ½” x 47 ½” strips.

- See instructions to cut (5) ornament toppers.

- (7) 2 ½” x WOF strips for the binding.

#### From the Large Snowflakes - Red (K), cut:

- See instructions to cut (1) stocking, using the stocking in the panel as a template.

#### From the Stocking Panel - Lt. Grey (L):

- Fussy cut (2) stockings, (1) of each design.

#### From the Large Snowflakes - Grey (M), cut:

- (1) 8 ½” x 54 ½” LOF strip.

#### From the Holly Leaves - Dk. Grey (Backing), cut:

- (2) 67” x WOF strips for the backing. Sew the strips together and trim to make the 67” x 74” back.

### Sewing Instructions

1. Sew (2) 3 ½” Fabric I squares, (3) 3 ½” x 6 ½” Fabric E strips, (3) 3 ½” x 6 ½” Fabric A strips, (2) 3 ½” x 6 ½” Fabric I strips together to make Pieced Row One. Repeat to make Pieced Row Three.

2. Sew (3) 3 ½” x 6 ½” Fabric G strips, (3) 3 ½” x 6 ½” Fabric I strips and (3) 3 ½” x 6 ½” Fabric E strips together to make Pieced Row Two. Repeat to make Pieced Row Four

3. Sew the four pieced rows together in numerical order to make the top section.

4. Sew (1) 2 ½” x 54 ½” Fabric J strip to the top and bottom of each side of the 23 ½” x 54 ½” Fabric C strip to make the middle section.

### Quilt Top Assembly (Refer to the quilt photo while assembling)

5. Sew the Top Section, Middle Section and (1)

- 8 ½” x 54 ½” Fabric M strip together, in that order, to make the quilt top.

6. Following the manufacturer’s instructions, trace the listed number of each template onto the paper side of the fusible web. Roughly cut out each template about ⅛” outside the drawn lines.

7. Press each template onto the wrong side of the fabrics as listed on the templates. Cut out each template on the drawn lines.

8. Refer to the quilt photo to arrange and press the (4) stockings, (5) ornaments and (4) large stars onto the quilt top. Sew the (4) small stars onto the (4) 5 ½” Fabric I squares.

9. Finish the raw edges of each shape with a decorative stitch such as a buttonhole or satin stitch.

10. Sew (1) 1 ½” x 47 ½” Fabric J strip to each side of the quilt top. Sew (1) 1 ½” x 56 ½” Fabric J strip to the top and to the bottom of the quilt top.

11. Sew (1) 5 ½” x 49 ½” Fabric D strip to each side of the quilt top. Sew (1) 5 ½” Fabric I square to each end of (1) 5 ½” x 56 ½” Fabric D strip to make (1) strip. Repeat to make a second strip. Sew the strips to the top and to the bottom of the quilt top.

12. Layer and quilt as desired.

13. Sew the (7) 2 ½” x WOF Fabric J strips together, end to end with 45° seams, to make the binding. Fold this long strip in half lengthwise with wrong sides together and press.

14. Bind as desired.

