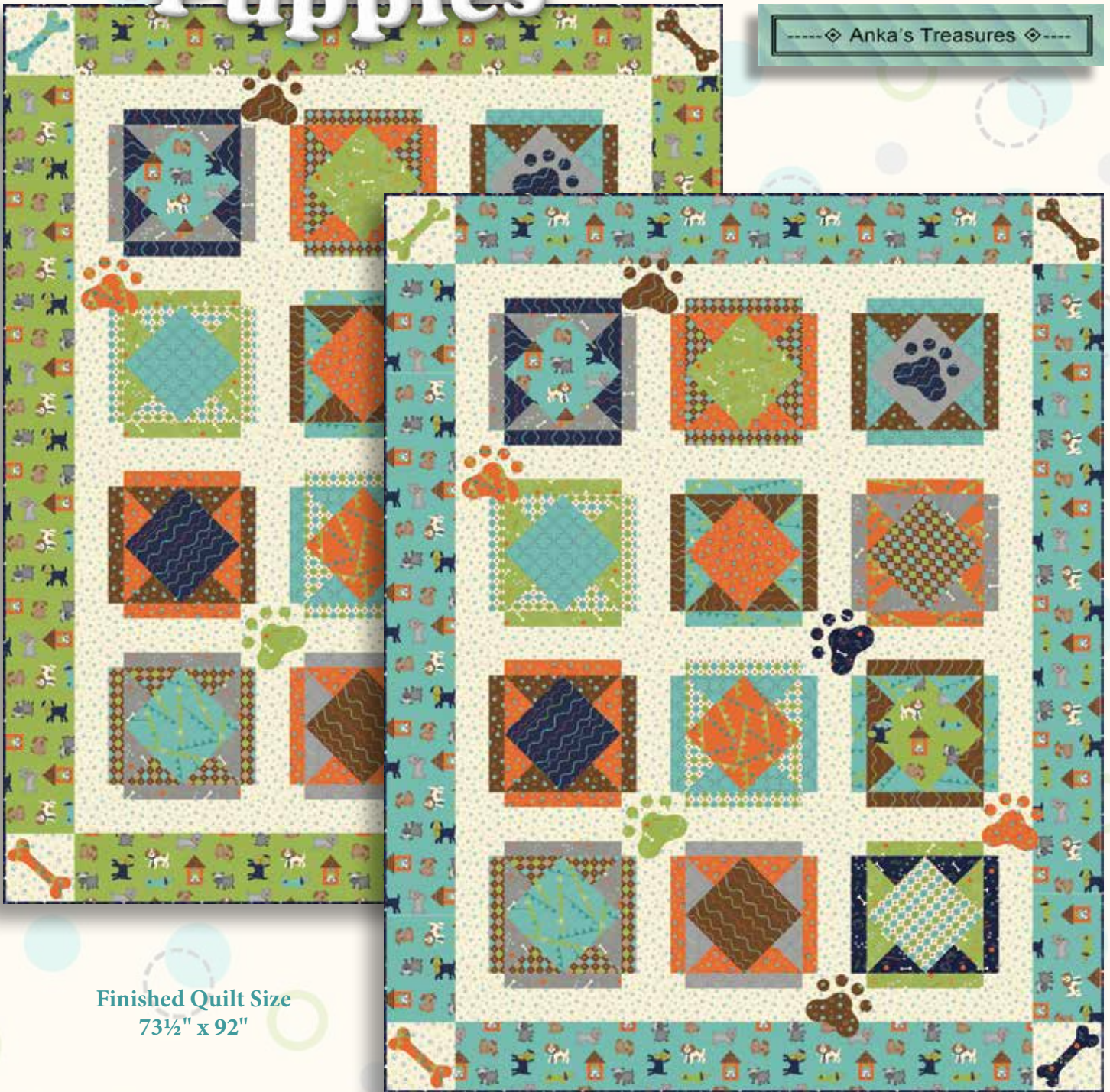


I Puppies

by Heather Mulder Peterson

-----◇ Anka's Treasures ◇-----



Finished Quilt Size
73½" x 92"

A Free Project Sheet from

 Henry Glass & Co., Inc.



49 West 37th Street, New York, NY 10018
tel: 212-686-5194 • fax: 212-532-3525
Toll-free: 800-294-9495
www.henryglassfabrics.com

facebook



Finished Block Size: 15" x 15"

Finished Quilt Size: 73½" x 92"

MATERIALS

Yardages are based on 42"-wide fabric.

¼ yard	Brown Dot	6174-33
½ yard	Brown Stripe	6170-33
½ yard	Dark Blue Stripe	6170-77
½ yard	Green "Bones"	6171-66
½ yard	Gray "Bones"	6170-90
½ yard	Turquoise Flags	6172-11
½ yard	Orange Flags	6172-30
½ yard	Orange Dot	6174-30
½ yard	Turquoise Circles	6175-11
½ yard	Gray Circles	6175-90
½ yard	Brown Diamonds	6176-36
½ yard	Off-white Diamonds	6176-46
⅞ yard	Dark Blue "Bones"	6171-77
<i>(includes binding)</i>		
2¼ yards	Off-white Dots	6174-44
5½ yards	Puppy Patches	6169-90
<i>(for backing)</i>		

GREEN-BORDERED QUILT

½ yard	Turquoise All-over Puppies	6177-11
1⅞ yards	Green All-over Puppies	6177-66

TURQUOISE-BORDERED QUILT

½ yard	Green All-over Puppies	6177-66
1⅞ yards	Turquoise All-over Puppies	6177-11

Template plastic

All supplies needed for your preferred method of appliqué including thread to match bone and paw-print motifs

CUTTING

All measurements include ¼" seam allowance.

From Brown Dot, cut:

- (2) 7¼" x 7¼" squares; cut diagonally twice
- (4) 2" x 12½" rectangles

Reserve remaining fabric for appliqué motifs.

From Orange Dot, cut:

- (1) 9" x 9" square
- (3) 7¼" x 7¼" squares; cut diagonally twice
- (6) 2" x 12½" rectangles

Reserve remaining fabric for appliqué motifs.

From Gray "Bones," cut:

- (3) 7¼" x 7¼" squares; cut diagonally twice
- (6) 2" x 12½" rectangles

From Brown Stripe, Green "Bones," Turquoise Flags, Turquoise Circles, Brown Diamonds, and Off-white Diamonds, cut:

- (1) 9" x 9" square
- (2) 7¼" x 7¼" squares; cut diagonally twice
- (4) 2" x 12½" rectangles

Reserve remaining fabric for appliqué motifs.

From Dark Blue Stripe, Orange Flags, and Gray Circles, cut:

- (1) 9" x 9" square
- (1) 7¼" x 7¼" square; cut diagonally twice
- (2) 2" x 12½" rectangles

Reserve remaining fabric for appliqué motifs.

From Dark Blue "Bones," cut:

- (1) 7¼" x 7¼" square; cut diagonally twice
- (2) 2" x 12½" rectangles
- (9) 2½" x WOF strips for the binding

Reserve remaining fabric for appliqué motifs.

From Off-white Dots, cut:

- (3) 2" x WOF strips; recut into (48) 2" x 2" squares
- (4) 7½" x 7½" squares
- (8) 4" x 15½" rectangles for vertical sashing
- (10) 4" x WOF strips for horizontal sashing and inner border

GREEN-BORDERED QUILT

From Turquoise All-over Puppies, cut:

- (1) 9" x 9" *on-point* square

From Green All-over Puppies, cut:

- (1) 9" x 9" *on-point* square
- (7) 7½" x WOF strips for outer border

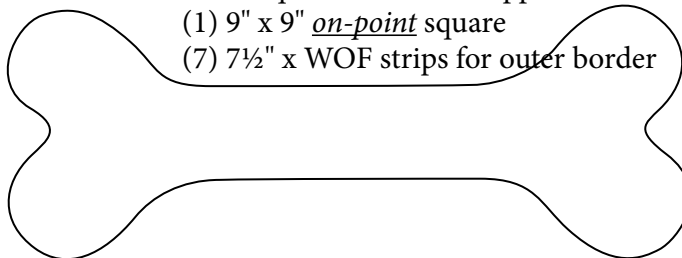
TURQUOISE-BORDERED QUILT

From Green All-over Puppies, cut:

- (1) 9" x 9" *on-point* square

From Turquoise All-over Puppies, cut:

- (1) 9" x 9" *on-point* square
- (7) 7½" x WOF strips for outer border

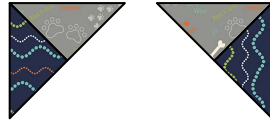


MAKING THE BLOCKS

Sew all pieces with right sides together and a ¼" seam allowance.

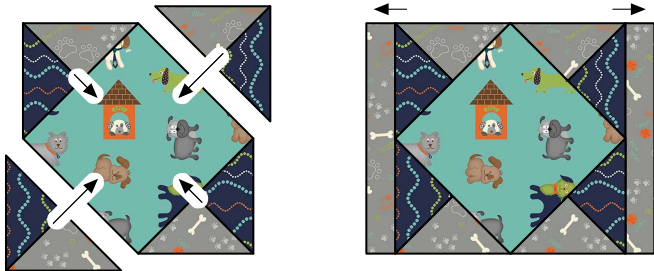
1. Referring to quilt pictured on the cover, sort the 9" squares, 7¼" quarter-square triangles, and 2" x 12½" rectangles into block groups.

2. Sew together the quarter-square triangles to make two mirror-image pairs. Press in either direction.

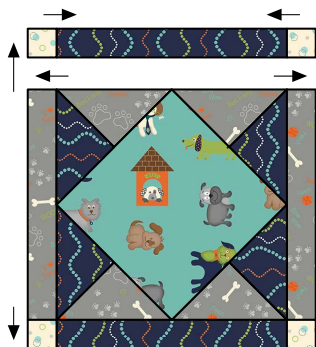


Make 2 of each.

3. Sew the quarter-square-triangle units to the sides of the 9" square. Press toward the square.
4. Sew the 2" x 12½" contrasting print rectangles to the sides of the unit from step 3. Press toward the rectangles.



5. Sew the 2" Off-White Dot squares to the ends of the remaining rectangles. Press toward the rectangle.



6. Sew the units from step 5 to the top and bottom of the unit from step 4. Press away from the center.
7. Repeat with the remaining fabric groupings to make a total of 12 blocks.

ASSEMBLING THE QUILT TOP

1. Sew together two 4" x 15½" Off-white Dot rectangles and three blocks to make a row. Press toward the sashing. Repeat to make a total of four rows.
2. Trim the selvages from the 4" x WOF Off-white Dot strips. Sew the strips together, end to end. From this long strip, cut (3) 52½", (2) 70½", and (2) 59½" lengths (if your measurements are different, cut to fit your quilt top). Sew the 52½" lengths between the block rows, the 59½" lengths to the sides of the quilt top, and the 70½" lengths to the top and bottom. Press toward the borders.

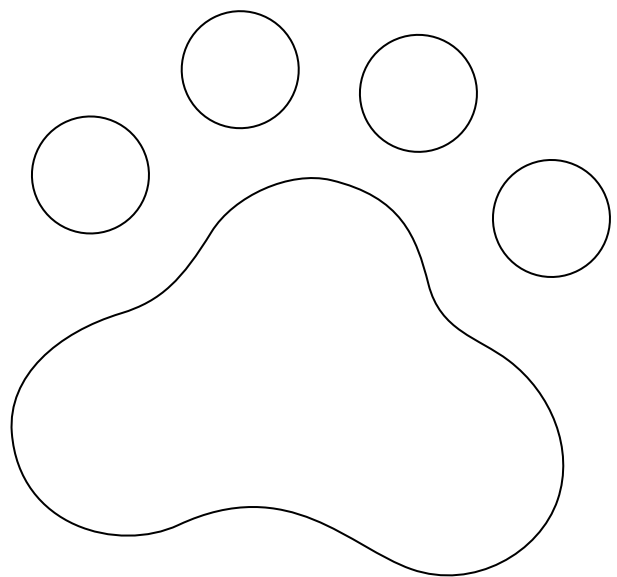
3. Trim the selvages from the 7½" x WOF Green or Turquoise All-over Puppy strips. Sew the strips together, end to end. From this long strip, cut (2) 59½" and (2) 78" lengths (if your measurements are different, cut to fit your quilt top). Sew the 78" lengths to the sides of the quilt top. Press toward the borders.
4. Sew the 7½" Off-white Dot squares to the ends of the 59½" lengths. Press away from the squares.
5. Sew the borders from step 4 to the top and bottom of the quilt top. Press toward the borders.

ADDING THE APPLIQUÉ

1. Enlarge the paper patterns provided 200%. Using the enlarged paper patterns and template plastic, make templates for the bones and paw prints.
2. Referring to the quilt pictured on the cover as a guide to fabric selection, prepare (4) bone and (7) paw print motifs.
3. Again referring to the quilt pictured on the cover as a placement guide, appliqué the prepared motifs to the quilt top using your favorite method.

FINISHING THE QUILT

1. Layer the completed quilt top with batting and backing. Quilt as desired.
2. Trim the batting and backing even with the outer edges of the quilt top. Bind the quilt using the 2½"-wide Dark Blue "Bones" strips.



I Puppies

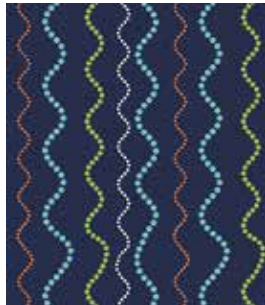
Fabrics in the Collection



6169-90
Puppy Patches



6170-33
Brown Stripe



6170-77
Dark Blue Stripe



6171-66
Green "Bones"



6171-77
Dark Blue "Bones"



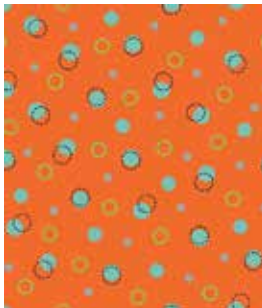
6171-90
Gray "Bones"



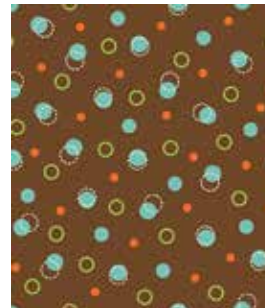
6172-11
Turquoise Flags



6172-30
Orange Flags



6174-30
Orange Dot



6174-33
Brown Dot



6174-44
Off-white Dot



6175-11
Turquoise
Circles



6175-90
Gray Circles



6176-36
Brown
Diamonds



6176-46
Off-white
Diamonds



6177-11
Turquoise
All-over
Puppies



6177-66
Green
All-over
Puppies