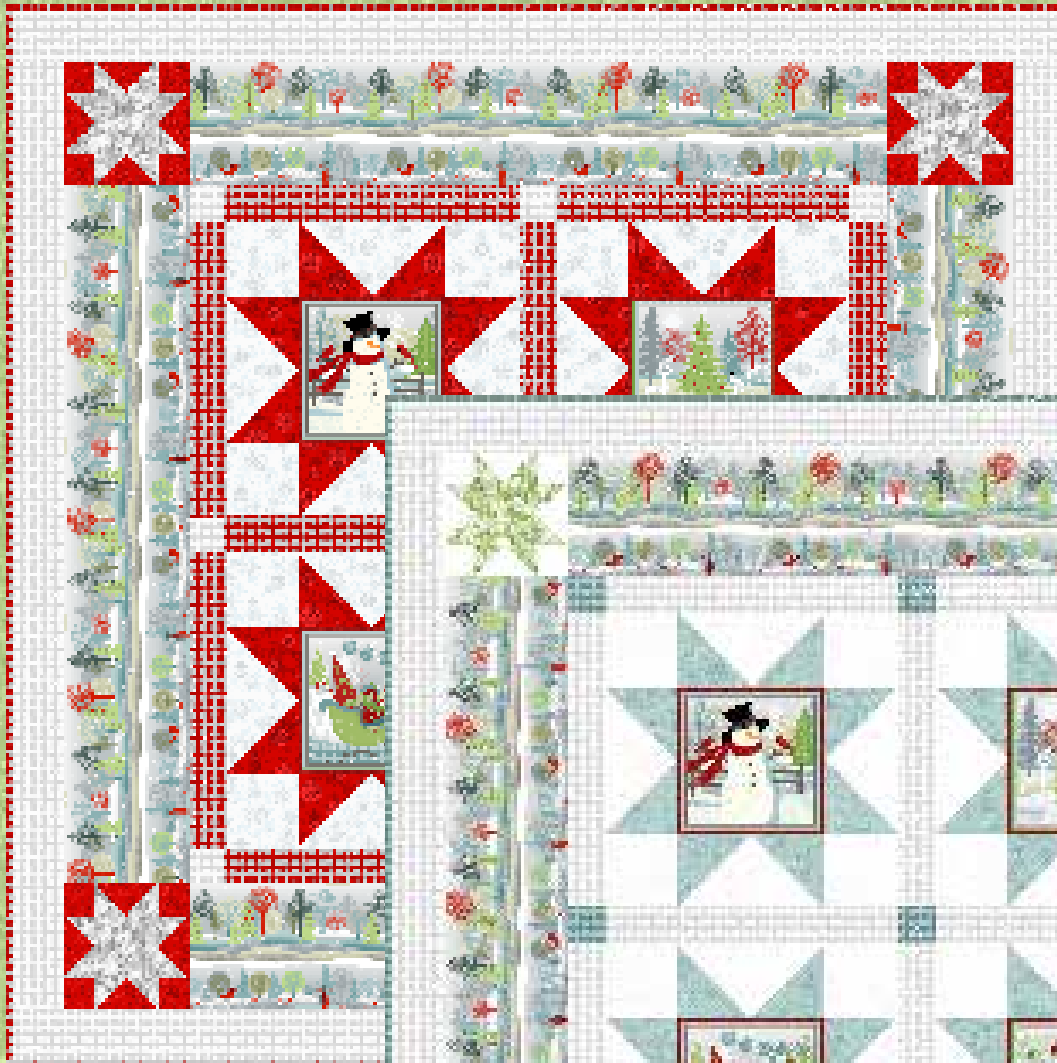


# Holiday Cheer

by Jan Shade Beach



Red Version  
Finished Quilt Size: 71½" x 71½"

Blue Version  
Finished Quilt Size: 71½" x 71½"



facebook

A Free Project Sheet From



Henry Glass & Co., Inc.

49 West 37th Street, New York, NY 10018  
tel: 212-686-5194 fax: 212-532-3525  
Toll Free: 800-294-9495  
[www.henryglassfabrics.com](http://www.henryglassfabrics.com)

## Materials for the Red Quilt

2/3 yard	Printed Panel	9683P-09
	<i>(one full panel)</i>	
1 1/2 yards	Printed Stripe	9684-09
1 1/4 yards	White Snowflakes	9685-09
1 yard	Red Snowflakes	9685-88
3/8 yard	Red Scroll	9687-88
1 yard	White Harlequin	9688-09
1 1/4 yards	Red Harlequin	9688-98
	<i>(includes binding)</i>	
1/2 yard	Gray Branches	9690-99
4 3/4 yards	Patchwork Print	9689-09
	<i>(for quilt backing)</i>	

## Cutting Instructions for the Red Quilt

*Please note: all strips, except for the printed stripe, are cut across the width of the fabric from selvage edge to selvage edge.*

### From the printed panel, cut:

- (4) 10 1/2" x 10 1/2" squares, fussy cut, with a printed motif centered in both directions in each square.

### From the printed stripe, cut:

- (4) *lengthwise* strips, 9" wide x length of fabric, using the border strips pictured in the quilt on the cover as a guide to correct motif placement in each strip.

### From the white snowflakes, cut:

- (7) 5 1/2" strips. Recut into (16) 5 1/2" x 10 1/2" pieces and (16) 5 1/2" x 5 1/2" squares.

### From the red snowflakes, cut:

- (5) 5 1/2" strips. Recut into (32) 5 1/2" x 5 1/2" squares.

### From the red scroll, cut:

- (3) 2 5/8" strips. Recut into (16) 2 5/8" x 4 3/4" pieces and (16) 2 5/8" x 2 5/8" squares.

### From the white harlequin, cut:

- (7) 4" strips for the outer border.
- (1) 3" strip. Recut into (9) 3" x 3" squares for the sashing cornerstones.

### From the red harlequin, cut:

- (6) 3" strips. Recut into (12) 3" x 20 1/2" pieces for the sashing.
- (8) 2 1/4" strips for the binding.

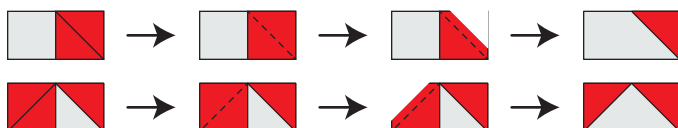
### From the gray branches, cut:

- (1) 4 3/4" strip. Recut into (4) 4 3/4" x 4 3/4" squares.
- (2) 2 5/8" strips. Recut into (32) 2 5/8" x 2 5/8" squares.

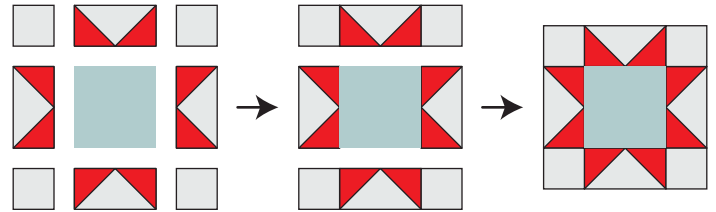
## Sewing Instructions for the Red Quilt

*All seams are sewn using 1/4" seam allowance with pieces held right sides together and raw edges even.*

1. Draw a diagonal line on the wrong side of a 5 1/2" red snowflakes square. Right sides together, layer the marked square on one end of a 5 1/2" x 10 1/2" white snowflakes piece, noting orientation. Sew on the marked line. Trim 1/4" beyond the seam line and press the resulting red triangle up to make the unit shown. Repeat this procedure for the opposite end of the white snowflakes piece to complete (1) large star point unit. Repeat to make a total of (4) units.



2. Arrange (1) 10 1/2" printed panel motif square, (4) large star point units, and (4) 5 1/2" white snowflakes squares into (3) rows with (3) units in each row, noting orientation of the star points and the printed motifs in the center square. Stitch the units into rows. Sew the rows together to complete (1) large star block measuring 20 1/2" from raw edge to raw edge in both directions.



3. Repeat steps 1 and 2 to make a total of (4) large star blocks.

4. Stitch together (3) 3" x 20 1/2" red harlequin sashing pieces and (2) large star blocks, alternating the two types of units and noting the orientation of the printed motifs in the block centers. Repeat to make a second block row.

5. Stitch together (3) 3" white harlequin cornerstone squares and (2) 3" x 20 1/2" red harlequin sashing pieces, alternating the two types of units. Repeat to make a total of (3) sashing rows.

6. Stitch together the block rows from step 4 and the sashing rows from step 5, alternating the two types of units, to complete the quilt center.

7. Trim each 9" border stripe strip to 48" (*if your measurements are different, cut to fit your quilt top*). Stitch a trimmed border strip to the left and right sides of the quilt top, noting orientation of the printed motifs in each strip.

8. Repeating the procedure from step 1, draw a diagonal line on the wrong side of a 2 5/8" gray branches square. Right sides together, layer the marked square on one end of a 2 5/8" x 4 3/4" red scroll piece, noting orientation. Sew on the marked line. Trim 1/4" beyond the seam line and press the resulting gray triangle up to make the unit shown. Repeat this procedure for the opposite end of the red scroll piece to complete (1) small star point unit. Repeat to make a total of (4) units.

9. Repeating the procedure from step 2, arrange (1) 4 3/4" gray branches square, (4) small star point units, and (4) 2 5/8" red scroll squares into (3) rows with (3) units in each row, noting orientation of the star points. Stitch the units into rows. Sew the rows together to complete (1) small star block measuring 9" from raw edge to raw edge in both directions.

10. Repeat steps 8 and 9 to make a total of (4) small star blocks.

11. Stitch a small star block to each end of the (2) remaining trimmed border stripe strips. Sew a pieced border unit to the top and bottom of the quilt top, again noting orientation of the printed motifs in the border stripe pieces.

12. Trim the selvages from the 4" white harlequin strips. Stitch the strips together, end to end, to make a long 4" strip. From this long strip, cut (2) 72" and (2) 65" lengths (*if your measurements are different, cut to fit your quilt top*). Stitch the shorter lengths to the left and right sides of the quilt top. Sew the longer lengths to the top and bottom.

13. Layer the completed quilt top with batting and backing and quilt as desired. Bind the finished quilt using the 2 1/4" red harlequin strips.

## Materials for the Blue Quilt

2/3 yard	Printed Panel <i>(one full panel)</i>	9683P-09
1 1/2 yards	Printed Stripe	9684-09
1 yard	Blue Snowflakes	9685-11
1 1/2 yards	White Harlequin	9688-09
3/4 yard	Blue Harlequin <i>(includes binding)</i>	9688-11
1/2 yard	Green Branches	9690-66
1 1/2 yards	White Tonal <i>(from Folio Basics collection)</i>	7755-01
4 3/4 yards	Patchwork Print <i>(for quilt backing)</i>	9689-09

## Cutting Instructions for the Blue Quilt

*Please note: all strips, except for the printed stripe, are cut across the width of the fabric from selvage edge to selvage edge.*

### From the printed panel, cut:

- (4) 10 1/2" x 10 1/2" squares, fussy cut, with a printed motif centered in both directions in each square.

### From the printed stripe, cut:

- (4) *lengthwise* strips, 9" wide x length of fabric, using the border strips pictured in the quilt on the cover as a guide to correct motif placement in each strip.

### From the blue snowflakes, cut:

- (5) 5 1/2" strips. Recut into (32) 5 1/2" x 5 1/2" squares.

### From the white harlequin, cut:

- (7) 4" strips for the outer border.
- (6) 3" strips. Recut into (12) 3" x 20 1/2" pieces for the sashing.

### From the blue harlequin, cut:

- (1) 3" strip. Recut into (9) 3" x 3" squares for the sashing cornerstones.
- (8) 2 1/4" strips for the binding.

### From the green branches, cut:

- (1) 4 3/4" strip. Recut into (4) 4 3/4" x 4 3/4" squares.
- (2) 2 5/8" strips. Recut into (32) 2 5/8" x 2 5/8" squares.

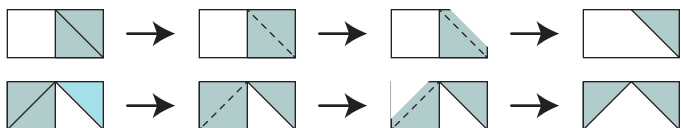
### From the white tonal, cut:

- (7) 5 1/2" strips. Recut into (16) 5 1/2" x 10 1/2" pieces and (16) 5 1/2" x 5 1/2" squares.
- (3) 2 5/8" strips. Recut into (16) 2 5/8" x 4 3/4" pieces and (16) 2 5/8" x 2 5/8" squares.

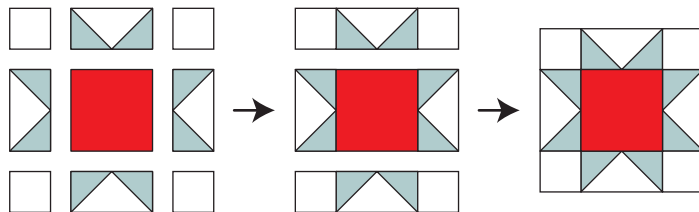
## Sewing Instructions for the Blue Quilt

*All seams are sewn using 1/4" seam allowance with pieces held right sides together and raw edges even.*

1. Draw a diagonal line on the wrong side of a 5 1/2" blue snowflakes square. Right sides together, layer the marked square on one end of a 5 1/2" x 10 1/2" white tonal piece, noting orientation. Sew on the marked line. Trim 1/4" beyond the seam line and press the resulting blue triangle up to make the unit shown. Repeat this procedure for the opposite end of the white tonal piece to complete (1) large star point unit. Repeat to make a total of (4) units.



2. Arrange (1) 10 1/2" printed panel motif square, (4) large star point units, and (4) 5 1/2" white tonal squares into (3) rows with (3) units in each row, noting orientation of the star points and the printed motifs in the center square. Stitch the units into rows. Sew the rows together to complete (1) large star block measuring 20 1/2" from raw edge to raw edge in both directions.



3. Repeat steps 1 and 2 to make a total of (4) large star blocks.
4. Stitch together (3) 3" x 20 1/2" white harlequin sashing pieces and (2) large star blocks, alternating the two types of units and noting the orientation of the printed motifs in the block centers. Repeat to make a second block row.
5. Stitch together (3) 3" blue harlequin cornerstone squares and (2) 3" x 20 1/2" white harlequin sashing pieces, alternating the two types of units. Repeat to make a total of (3) sashing rows.
6. Stitch together the block rows from step 4 and the sashing rows from step 5, alternating the two types of units, to complete the quilt center.
7. Trim each 9" border stripe strip to 48" (*if your measurements are different, cut to fit your quilt top*). Stitch a trimmed border strip to the left and right sides of the quilt top, noting orientation of the printed motifs in each strip.
8. Repeating the procedure from step 2, draw a diagonal line on the wrong side of a 2 5/8" green branches square. Right sides together, layer the marked square on one end of a 2 5/8" x 4 3/4" white tonal piece, noting orientation. Sew on the marked line. Trim 1/4" beyond the seam line and press the resulting green triangle up to make the unit shown. Repeat this procedure for the opposite end of the white tonal piece to complete (1) small star point unit. Repeat to make a total of (4) units.
9. Repeating the procedure from step 2, arrange (1) 4 3/4" green branches square, (4) small star point units, and (4) 2 5/8" white tonal squares into (3) rows with (3) units in each row, noting orientation of the star points. Stitch the units into rows. Sew the rows together to complete (1) small star block measuring 9" from raw edge to raw edge in both directions.
10. Repeat steps 8 and 9 to make a total of (4) small star blocks.
11. Stitch a small star block to each end of the (2) remaining trimmed border stripe strips. Sew a pieced border unit to the top and bottom of the quilt top, again noting orientation of the printed motifs in the border stripe pieces.
12. Trim the selvages from the 4" white harlequin strips. Stitch the strips together, end to end, to make a long 4" strip. From this long strip, cut (2) 72" and (2) 65" lengths (*if your measurements are different, cut to fit your quilt top*). Stitch the shorter lengths to the left and right sides of the quilt top. Sew the longer lengths to the top and bottom.
13. Layer the completed quilt top with batting and backing and quilt as desired. Bind the finished quilt using the 2 1/4" blue harlequin strips.



# Holiday Cheer

# Fabrics in the Collection



9683P-09  
Printed Panel



9684-09  
Printed Stripe



9685-09  
White Snowflakes



9685-11  
Blue Snowflakes



9685-88  
Red Snowflakes



9686-01  
Blue Trees



9686-09  
Red Trees



9689-09  
Patchwork Print



9687-11  
Blue Scroll



9687-66  
Green Scroll



9687-88  
Red Scroll



9688-09  
White Harlequin



9688-11  
Blue Harlequin



9688-98  
Red Harlequin



9690-99  
Gray Branches



9690-66  
Green Branches