

Holiday Frost

by Jan Shade Beach from The Shady Knoll Archives



Finished Panel Quilt Size: 58 $\frac{3}{4}$ " x 68 $\frac{3}{8}$ "
Finished Ornament Quilt Size: 61" x 75"

49 West 37th Street, New York, NY 10018
tel: 212-686-5194 fax: 212-532-3525
Toll Free: 800-294-9495
www.henryglassfabrics.com

A Free Project Sheet From



Henry Glass & Co., Inc.



facebook

Holiday Frost

Panel Quilt

Materials for the Panel Quilt

1⅜ yards	Printed Panel <i>(five full rows of motif squares)</i>	9511P-98
1¾ yards	Holiday Forest	9512-98
1¾ yards	Red Tonal <i>(includes binding)</i>	9514-88
½ yard	Gray Tonal	9514-99
1 yard	White on Gray Swirls	9516-99
4⅞ yards	Red Ornaments on White <i>(for quilt backing/two vertical panels)</i>	9518-08

Cutting Instructions for the Panel Quilt

Please note: all strips, except for the holiday forest fabric, are cut across the width of the fabric from selvage edge to selvage edge.

From the printed panel, cut:

- (24) 7⅞" x 7⅞" squares, with a printed motif centered in both directions in each square.

From the holiday forest, cut:

- (4) *lengthwise* strips 7⅞" wide x length of fabric.

From the red tonal, cut:

- (3) 3" strips. Recut into (30) 3" x 3" squares.
(7) 2¼" strips for the binding.
(18) 1¾" strips. Set aside (6) strips for the inner border. Recut (1) strip into (4) 1¾" x 7⅞" pieces. Recut (11) strips into (240) 1¾" x 1¾" squares.

From the gray tonal, cut:

- (6) 1¾" strips. Recut (4) strips into (18) 1¾" x 7⅞" pieces and (4) 1¾" x 1¾" squares. Recut (2) strips into (22) 1¾" x 3" pieces.

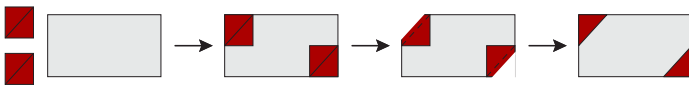
From the white on gray swirls, cut:

- (10) 3" strips. Recut into (49) 3" x 7⅞" pieces.

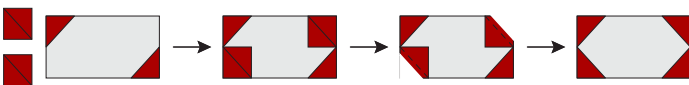
Sewing Instructions for the Panel Quilt

All seams are sewn using 1/4" seam allowance with pieces held right sides together and raw edges even.

1. Draw diagonal lines on the wrong sides of (2) 1¾" red tonal squares. Right sides together, layer the marked squares in opposite corners of a 3" x 7⅞" white on gray swirls piece. Stitch on the marked lines. Trim 1/4" beyond the seam lines and press the resulting red triangles out as shown.



2. Draw diagonal lines on the wrong sides of (2) 1¾" red tonal squares. Right sides together, layer the marked squares in the remaining gray corners of the unit from step 1. Sew on the marked lines. Trim 1/4" beyond the seam lines and press the resulting red triangles out to complete (1) star point sashing unit as shown.



3. Repeat steps 1 and 2 to make a total of (49) star point sashing units.
4. Using the quilt pictured on the cover as a guide, stitch together

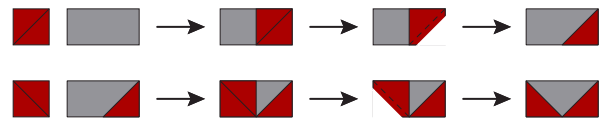
(5) star point sashing units and (4) 7⅞" printed panel motif squares, alternating the two types of units, to complete (1) block row. Repeat to make a total of (5) block rows.

5. Again referring to the quilt pictured on the cover, stitch together (5) 3" red tonal squares and (4) star point sashing units, alternating the two types of units, to make (1) sashing row.

Repeat to make a total of (6) sashing rows.

6. Stitch the block and sashing rows together, alternating the two types of rows, to complete the main part of the quilt center.

7. Draw a diagonal line on the wrong side of (1) 1¾" red tonal square. Right sides together, layer the marked square on one end of a 1¾" x 3" gray tonal piece. Stitch on the marked line. Trim 1/4" beyond the seam line and press the resulting red triangle up as shown. Repeat this procedure for the opposite end of the gray tonal piece to complete (1) red and gray star point unit. Repeat to make a total of (22) red and gray star point units.



8. Stitch together (6) red and gray star point units and (5) 1¾" x 7⅞" gray tonal pieces, alternating the two types of units. Repeat to make a second unit. Stitch these pieced borders to the left and right sides of the quilt top, noting orientation.

9. Stitch together (5) red and gray star point units and (4) 1¾" x 7⅞" gray tonal pieces, alternating the two types of units. Stitch 1¾" gray tonal squares to each end of this pieced border. Repeat to make a second unit. Stitch these pieced borders to the top and bottom of the quilt top, noting orientation.

10. Trim the selvages from the 1¾" red tonal strips reserved for the inner border. Stitch the strips together, end to end, to make a long 1¾" strip. From this long strip, cut (2) 52⅞" lengths (*if your measurements are different, cut to fit your quilt top*). Stitch these lengths to the left and right sides of the quilt top. Reserve the unused portion of this strip for step 12.

11. Matching center points, pin 7⅞" holiday forest strips to the left and right sides of the quilt top, noting orientation of the printed motifs. Stitch the holiday forest strips to the quilt top. Press the seams toward the holiday forest strips. Trim the border strips even with the top and bottom edges of the quilt top.

12. From the unused portion of the long 1¾" red tonal strip made in step 10, cut (2) 59¼" lengths (*if your measurements are different, cut to fit your quilt top*). Stitch these lengths to the top and bottom of the quilt top.

13. Trim (2) 7⅞" holiday forest strips to 43" (*if your measurements are different, cut to fit your quilt top*). Stitch 1¾" x 7⅞" red tonal pieces to the short ends of each trimmed holiday forest strip. Stitch 7⅞" printed panel motif squares to each end of both border units, noting orientation of the motif squares. Stitch these pieced borders to the top and bottom of the quilt top, again noting orientation.

14. Layer the completed quilt top with batting and backing and quilt as desired.

15. Bind the finished quilt using the 2¼" red tonal strips.

Holiday Frost

Ornament Quilt

Materials for the Ornament Quilt

7/8 yard	Reindeer Print	9513-08
1 1/8 yards	Red Tonal <i>(includes binding)</i>	9514-88
1 1/8 yards	Red Motifs Print	9515-88
1 1/4 yards	Red on White Swirls	9516-08
7/8 yard	Gray on White Swirls	9516-09
1/4 yard	White on Red Swirls	9516-88
1/4 yard	Red Snowflakes	9517-88
4/8 yards	Red Ornaments on White <i>(for quilt backing/two vertical panels)</i>	9518-08

All supplies for your preferred method of appliqué including template plastic and thread to match the red fabrics.

Cutting Instructions for the Ornament Quilt

Please note: all strips are cut across the width of the fabric from selvage edge to selvage edge.

From the reindeer print, cut:

(3) 8 1/2" strips. Trim each strip to 40 1/2".

From the red tonal, cut:

- (7) 2 1/4" strips for the binding.
- (9) 2" strips for the inner border and sashing.
- (3) 1" strips for the ornament hanger strips.

From the red motifs print, cut:

(7) 3 1/2" strips for the outer border. Reserve remaining fabric for ornament appliqués.

From the red on white swirls, cut:

(6) 6 1/2" strips for the middle border.

From the gray on white swirls, cut:

(2) 12 1/2" strips. Trim each strip to 40 1/2".

Reserve the white on red swirls and red snowflakes fabrics for ornament appliqués.

Appliqué

1. Using the paper patterns provided and template plastic, make templates for each of the (3) ornament shapes. Please note that the patterns provided are full-size, are not reversed, and do not include seam allowances.

2. As necessary for your preferred method of appliqué, prepare (14) ornament motifs:

- (4) red motifs print circle ornaments
- (1) white on red swirls circle ornament
- (1) red snowflakes circle ornament
- (2) red motifs print saucer ornaments
- (1) white on red swirls saucer ornament
- (1) red snowflakes saucer ornament
- (2) red motifs print teardrop ornaments
- (1) white on red swirls teardrop ornament
- (1) red snowflakes teardrop ornament

Using the quilt pictured on the cover as a guide, fussy cut all of the red motifs print ornaments to center a printed motif in each ornament shape.

3. Using your favorite method and the 1" red tonal strips, prepare (14) ornament hanger strips with a finished width of 1/2"

Prepare (6) 6" long hangers for the circle ornaments, (4) 7" long hangers for the teardrop ornaments and (4) 4 1/2" long hangers for the saucer ornaments.

4. Using the quilt pictured on the cover as a guide, arrange (7) ornaments and their hangers onto (1) 12 1/2" x 40 1/2" gray on white swirls background strip. Using the method of your choice, appliqué the hangers and ornaments to the background strip. Repeat to make a second identical strip.

Sewing Instructions for the Ornament Quilt

All seams are sewn using 1/4" seam allowance with pieces held right sides together and raw edges even.

5. Trim (4) 2" red tonal strips to 40 1/2". Stitch a trimmed red tonal strip to the top and bottom of each appliqué ornament strip from step 4.

6. Stitch together (3) 8 1/2" x 40 1/2" reindeer print strips and (2) ornament strip units from step 5, alternating the two types of units, as shown in the quilt on the cover.

7. Trim the selvages from the (5) remaining 2" red tonal strips. Sew the strips together end to end to make a long 2" strip. From this long 2" strip, cut (2) 54 1/2" and (2) 43 1/2" lengths (*if your measurements are different, cut to fit your quilt top*). Stitch the longer lengths to the left and right sides of the quilt top. Sew the shorter lengths to the top and bottom to complete the inner border.

8. Trim the selvages from the 6 1/2" red on white swirls strips. Sew the strips together end to end to make a long 6 1/2" strip. From this long strip, cut (2) 57 1/2" and (2) 55 1/2" lengths (*if your measurements are different, cut to fit your quilt top*). Stitch the longer lengths to the left and right sides of the quilt top. Sew the shorter lengths to the top and bottom to complete the middle border.

9. Trim the selvages from the 3 1/2" red motifs print strips. Sew the strips together end to end to make a long 3 1/2" strip, noting orientation of the printed motifs on the strips. From this long strip, cut (2) 69 1/2" and (2) 61 1/2" lengths (*if your measurements are different, cut to fit your quilt top*). Stitch the longer lengths to the left and right sides of the quilt top. Sew the shorter lengths to the top and bottom to complete the outer border.

10. Layer the completed quilt top with batting and backing and quilt as desired.

11. Bind the finished quilt using the 2 1/4" red tonal strips.

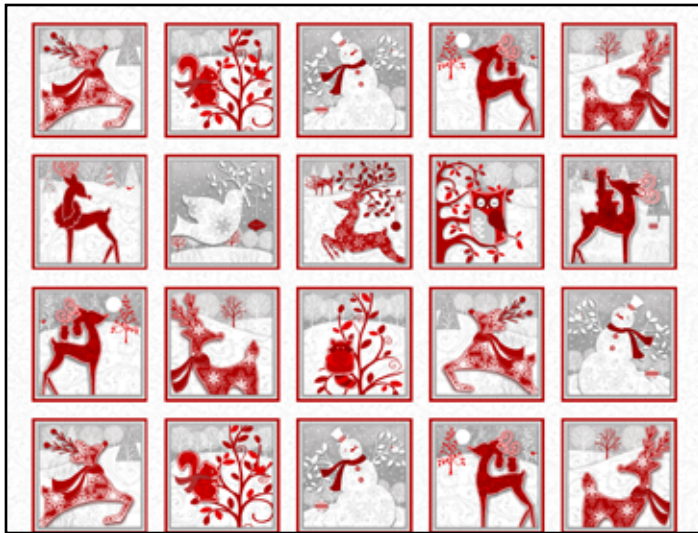
Teardrop Ornament
Template

Circle
Ornament
Template

Saucer Ornament
Template

Holiday Frost

Fabrics in the Collection



9511P-98
Printed Panel



9512-98
Holiday Forest
(please note: print runs lengthwise, parallel to the selvage edges)



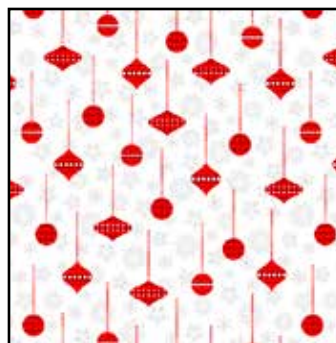
9513-08
Reindeer Print



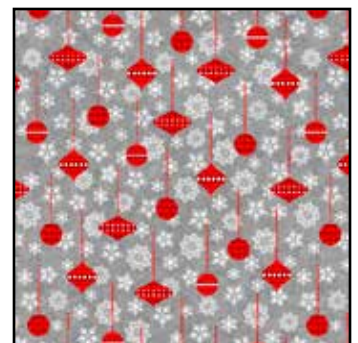
9515-88
Red Motifs Print



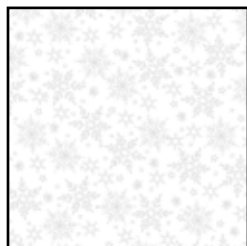
9515-99
Gray Motifs Print



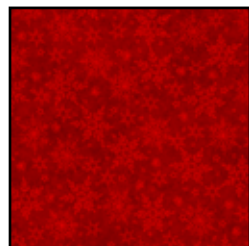
9518-08
Red Ornaments on White



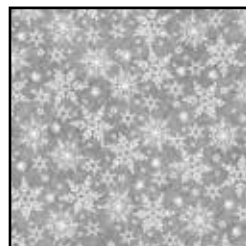
9518-98
Red Ornaments on Gray



9514-09
White Tonal



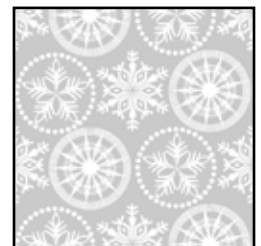
9514-88
Red Tonal



9514-99
Gray Tonal



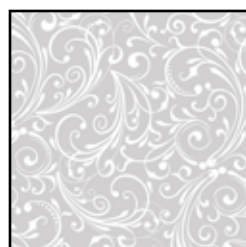
9517-88
Red Snowflakes



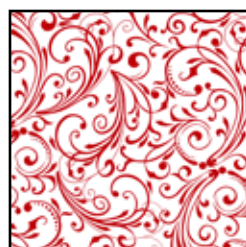
9517-99
Gray Snowflakes



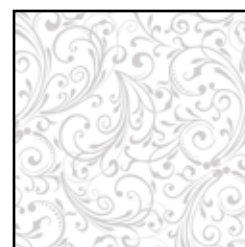
9516-88
White on Red Swirls



9516-99
White on Gray Swirls



9516-08
Red on White Swirls



9516-09
Gray on White Swirls