

Flannel Yarn Dyes



A Free Project Sheet From

 Henry Glass & Co., Inc.



Finished Quilt Size: 72½" x 90½"

49 West 37th Street, New York, NY 10018

tel: 212-686-5194 fax: 212-532-3525

Toll Free: 800-294-9495

www.henryglassfabrics.com



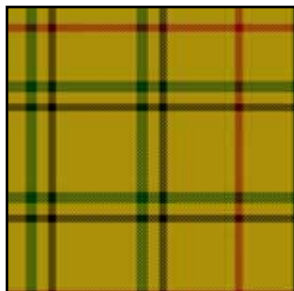
Flannel Yarn Dyes

Quilts Designed by: Cate Tallman-Evans

Finished Quilt Size: 72½" x 90½"

Finished Block Size: 9" x 9"

Fabrics in the Collection



YF5903-44
Gold Plaid



YF5903-66
Green Plaid



YF5903-88
Red Plaid



YF5903-99
Black Plaid



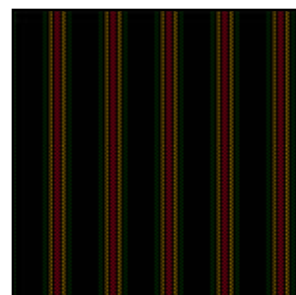
YF5903-864
Cream Plaid



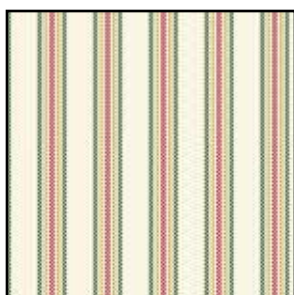
YF5904-66
Green Stripe



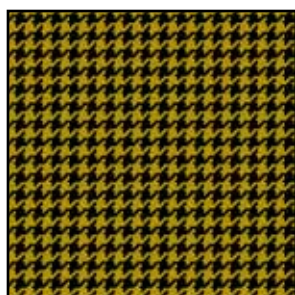
YF5904-88
Red Stripe



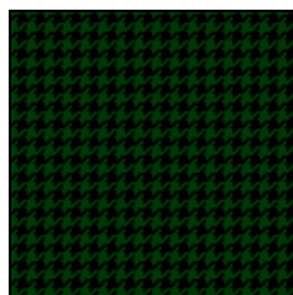
YF5904-99
Black Stripe



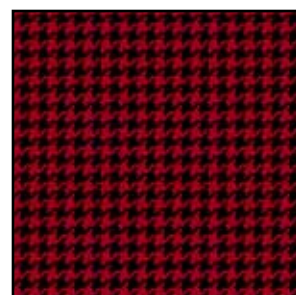
YF5904-864
Cream Stripe



YF5905-49
Gold/Black Check



YF5905-69
Green/Black Check



YF5905-89
Red/Black Check



YF5906-66
Green Small Plaid



YF5906-88
Red Small Plaid



YF5906-864
Cream Small Plaid

Materials

For the Blocks

¼ yard	Gold Plaid	YF5903-44
¼ yard	Green Plaid	YF5903-66
¼ yard	Red Plaid	YF5903-88
¼ yard	Black Plaid	YF5903-99
⅞ yard	Cream Plaid	YF5903-864
¼ yard	Green Stripe	YF5904-66
¼ yard	Red Stripe	YF5904-88
¼ yard	Black Stripe	YF5904-99
⅞ yard	Cream Stripe	YF5904-864
¼ yard	Gold/Black Check	YF5905-49
¼ yard	Green/Black Check	YF5905-69
¼ yard	Red/Black Check	YF5905-89
¼ yard	Green Small Plaid	YF5906-66
¼ yard	Red Small Plaid	YF5906-88
⅞ yard	Cream Small Plaid	YF5906-864

For the Borders, Binding, and Backing

Gold Version

1⅞ yards	Gold Plaid	YF5903-44	<i>(outer border)</i>
¾ yard	Green/Black Check	YF5905-69	<i>(binding)</i>
¾ yard	Red/Black Check	YF5905-89	<i>(inner border)</i>
5¾ yards	Green Small Plaid	YF5906-66	<i>(quilt backing)</i>

For the Borders, Binding, and Backing

Green Version

1⅞ yards	Green Plaid	YF5903-66	<i>(outer border)</i>
¾ yard	Red/Black Check	YF5905-89	<i>(inner border)</i>
¾ yard	Green Small Plaid	YF5906-66	<i>(binding)</i>
5¾ yards	Green Small Plaid	YF5906-66	<i>(quilt backing)</i>

For the Borders, Binding, and Backing

Red Version

¾ yard	Green Plaid	YF5903-66	<i>(binding)</i>
1⅞ yards	Red Plaid	YF5903-88	<i>(outer border)</i>
¾ yard	Green/Black Check	YF5905-69	<i>(inner border)</i>
5¾ yards	Green Small Plaid	YF5906-66	<i>(quilt backing)</i>

Cutting Instructions

Please note: all strips are cut across the width of the fabric from selvage edge to selvage edge.

From EACH of the (3) cream fabrics, cut:

(12) 2" strips.

Recut the (36) cream 2" strips into:

(48) 2" x 9½", (48) 2" x 8", (48) 2" x 5¾", (48) 2" x 4¼" pieces and (48) 2" x 2" squares.

From EACH of the (12) ¼ yard cuts of gold, green, red, and black fabrics, cut:

(2) 2¾" strips. Recut one strip into (4) 2¾" x 8" and (4) 2¾" x 2" pieces. Recut the second strip into (4) 2¾" x 5¾" and (4) 2¾" x 4¼" pieces.

From the inner border fabric, cut:

(7) 2¾" strips.

From the outer border fabric, cut:

(8) 7½" strips.

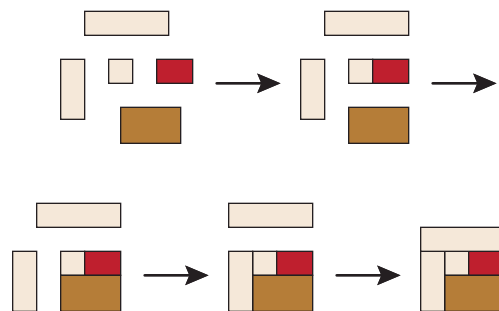
From the binding fabric, cut:

(9) 2½" strips.

Sewing Instructions

All seams are sewn using ¼" seam allowance with pieces held right sides together and raw edges even.

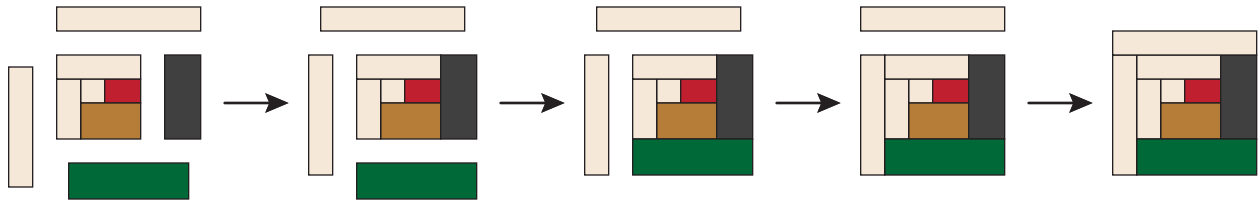
1. Stitch a 2" x 2¾" colored piece to the right-hand side of a 2" cream square. Sew a 2¾" x 4¼" colored piece to the bottom of this unit. Stitch a 2" x 4¼" cream piece to the left-hand side of the unit. Sew a 2" x 5¾" cream piece to the top of the block to complete Round 1 of the block assembly.



2. Referring to the diagram on the next page, stitch a 2¾" x 5¾" colored piece to the right-hand side of the unit from step 1. Sew a 2¾" x 8" colored piece to the bottom of the block. Stitch a 2" x 8" cream piece to the left-hand side of the unit. Sew a 2" x 9½" cream piece to the top of the block to complete (1) off-center log cabin block.

3. Repeat steps 1-2 to make a total of (48) blocks.

Block Assembly Diagram



Quilt Assembly

1. Referring to the Quilt Assembly Diagram below and the quilts pictured on the cover, arrange the blocks into (8) rows with (6) blocks in each row. Rotate the individual blocks as necessary to create the overall off-set star quilt pattern. Stitch the blocks into rows and sew the rows together to complete the quilt center.
2. Trim the selvages from the $2\frac{3}{4}$ " inner border strips and stitch the strips together end to end to make a long $2\frac{3}{4}$ " strip. From this long strip, cut (2) $72\frac{1}{2}$ " and (2) 59" lengths (*if your measurements are different, cut to fit your quilt top*). Stitch the longer lengths to the left and right sides of the quilt top. Sew the shorter lengths to the top and bottom.
3. Trim the selvages from the $7\frac{1}{2}$ " outer border strips and stitch the strips together end to end to make a long $7\frac{1}{2}$ " strip. From this long strip, cut (2) 77" and (2) 73" lengths (*if your measurements are different, cut to fit your quilt top*). Stitch the longer lengths to the left and right sides of the quilt top. Sew the shorter lengths to the top and bottom.
4. Layer the completed quilt top with batting and backing and quilt as desired.
5. Trim the batting and backing even with the outer edges of the quilt top. Bind the finished quilt using the $2\frac{1}{2}$ " strips cut for the binding.

Quilt Assembly Diagram

Top of Quilt

